



US Army Corps of Engineers  
Rock Island District

# Lake Red Rock

## Area Map

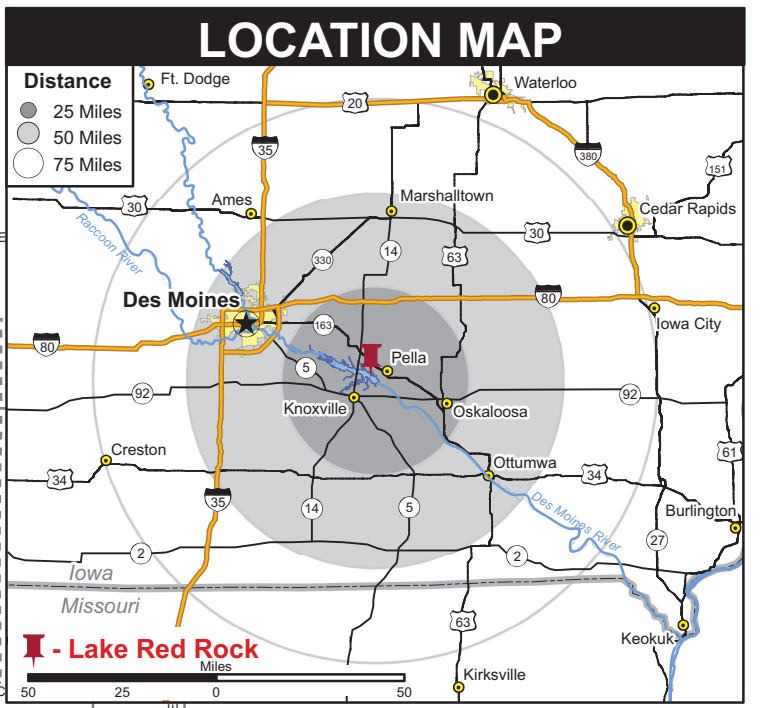
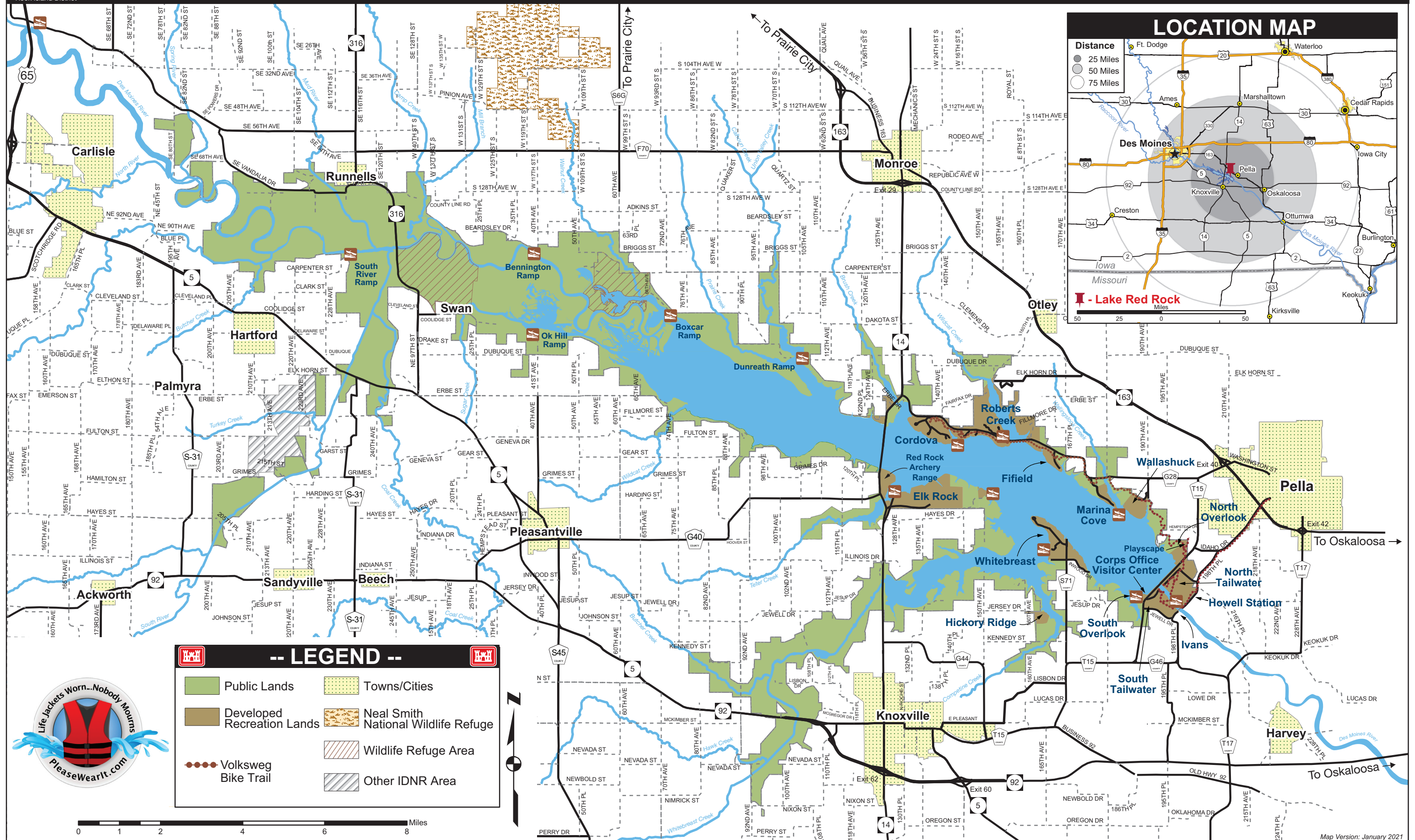
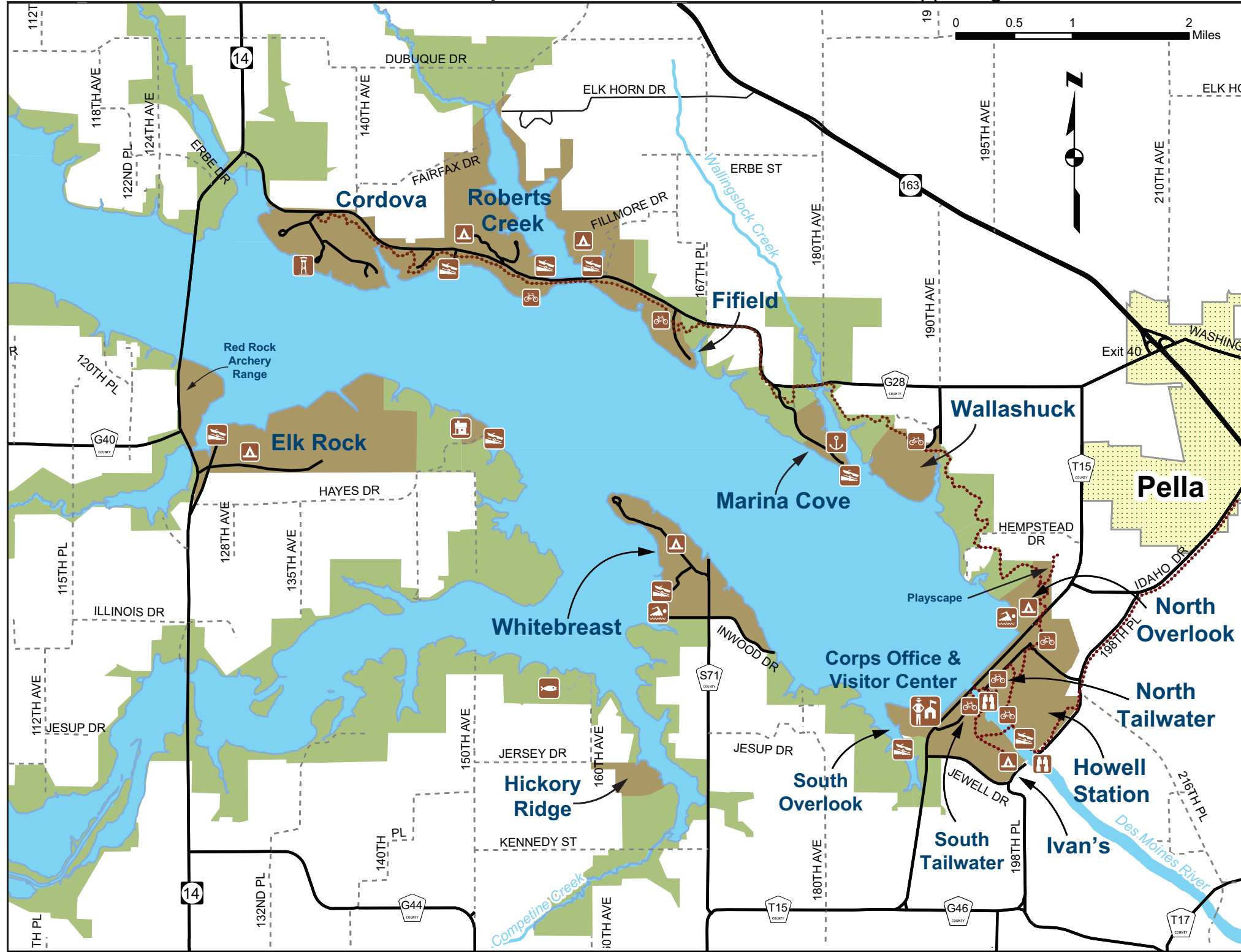


Figure 1.



# Welcome to Iowa's Largest Lake



Lake Red Rock has over 15,000 surface acres of water at normal conservation pool, which is 742 feet above sea level. Located on the Des Moines River just 45 miles southeast and downriver from Des Moines, the reservoir collects runoff and drainage from over 12,320 square miles of Iowa and southern Minnesota land. This protects communities and agriculture lands downstream from the Red Rock Dam. The maximum flood control pool is 780 feet above sea level, over 33 miles long, and covers 65,500 acres. Other lake area benefits include numerous recreational opportunities and natural resources on the water and surrounding public lands.

## Project Office & Visitor Center Hours

Mon - Fri 7:30 a.m. - 4:00 p.m

Additional Weekend Hours (Mar - Oct)  
Sat - Sun 12:00 - 4:00 p.m.

Parks	Boat Ramp	Bicycle Trail	Camping	Primitive Camping	Dump Stations	Electrical Sites	Fish Cleaning Stations	Group Camp Areas	Hiking Trail	Horse Trails	Information	Rental Cabins	Marina	Picnic Areas	Playground	Restrooms	Showers	Swimming Beach	Water
Fifield	●	●	●	●															
Hickory Ridge	●	●	●	●															
Howell Station	●	●	●	●															
Ivan's	●	●	●	●															
Marina Cove	●	●	●	●															
North Overlook	●	●	●	●															
North Tailwater	●	●	●	●															
South Overlook	●	●	●	●															
South Tailwater	●	●	●	●															
Wallashuck	●	●	●	●															
Whitebreast	●	●	●	●															
Visitor Center	●	●	●	●															
Elk Rock	●	●	●	●															
Cordova	●	●	●	●															
Roberts Creek	●	●	●	●															

- Corps Managed Area  
 - State Managed Area  
 - Marion County Managed Area  
 - Indicates Universally Accessible Facilities Available

**To reserve a campsite at Lake Red Rock:**

[www.recreation.gov](http://www.recreation.gov) (Corps managed)  
[www.reserveiaparks.com](http://www.reserveiaparks.com) (IDNR Managed)  
[www.mycountyparks.com](http://www.mycountyparks.com) (Roberts Creek)

### Legend

- Towns/ Cities
- Gravel Roads
- Paved Roadways
- Volksweg Bike Trail
- Public Lands
- Developed Recreation Areas
- Campground
- Marina
- Boat Ramp
- Fishing Pond
- Watchable Wildlife Area
- Volksweg Trailhead
- US Army Corps of Engineers Lake Red Rock Project Office
- IDNR Ranger Office
- Cordova Park Tower

### Emergency/Information

All Emergency Services.....dial 911

**US Army Corps of Engineers**  
 Lake Red Rock Project  
 1105 Hwy T15, Knoxville, IA 50138  
 (641) 828-7522 or (641) 628-8690  
[www.lakeredrock.org](http://www.lakeredrock.org)  
[www.facebook.com/lakeredrock](http://www.facebook.com/lakeredrock)

**Elk Rock State Park**  
 Park Ranger  
 811 146th Avenue  
 Knoxville, IA 50138  
 (641) 842-6008  
[www.iowadnr.gov](http://www.iowadnr.gov)

**Roberts Creek County Park**  
 Park Ranger  
 1617 Fillmore Avenue  
 Otley, IA 50214  
 (641) 627-5507  
[www.mycountyparks.com](http://www.mycountyparks.com)

**Cordova County Park**  
 Park Ranger  
 County Naturalist  
 1378 Highway G-28  
 Otley, IA 50214  
 (641) 627-5935  
[www.mycountyparks.com](http://www.mycountyparks.com)

Figure 1. a