

Lake Red Rock Fish Habitat Enhancement Project



2011 Aerial Photo of
Lake Red Rock Sediment
Deposits at confluence of
Des Moines River

Figure 3. Red Rock Sedimentation Aerial Photos from ISU GIS Website

Supporting Material

2011 Aerial Photo of
Lake Red Rock Sediment
Deposits at confluence of
Des Moines River

(Yellow arrow in both photos points to sand pile from former sand quarry as visual reference to extent of sediment coverage.)



Lake Red Rock Fish Habitat Enhancement Project

Supporting Material



1996 Aerial Photo of Red Rock Lake Cove, Left side of photo is west, top is north



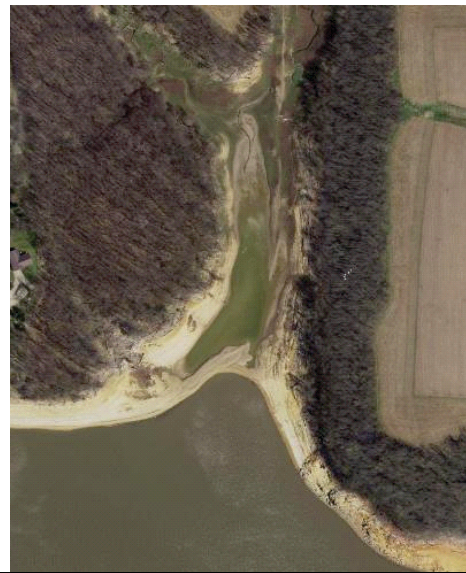
2002 Aerial Photo of Red Rock Lake Cove, Left side of photo is west, top is north



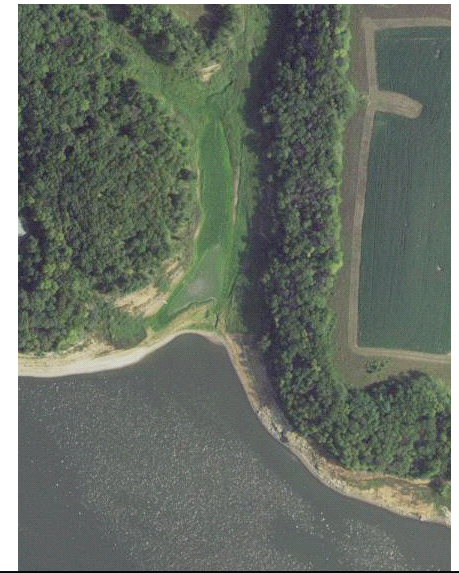
2008 Aerial Photo of Red Rock Lake Cove, Left side of photo is west, top is north



2011 Aerial Photo of Red Rock Lake Cove, Left side of photo is west, top is north



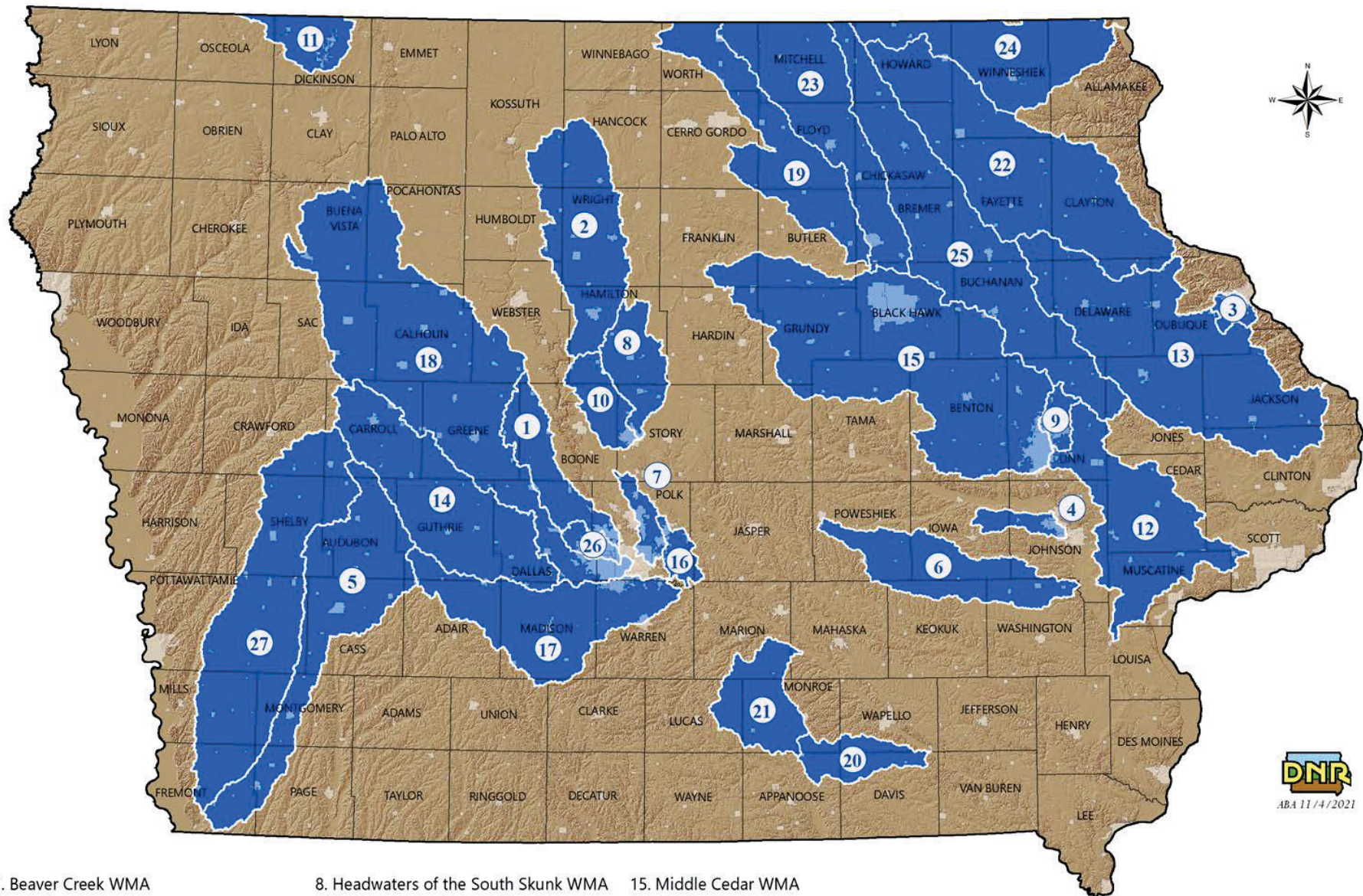
2016 Aerial Photo of Red Rock Lake Cove, Left side of photo is west, top is north



2016 Aerial Photo of Red Rock Lake Cove, Left side of photo is west, top is north

Figure 4. Lake Red Rock Shoreline Erosion Photos from ISU GIS Website

IOWA'S WATERSHED MANAGEMENT AUTHORITIES



- | | | |
|---|---------------------------------------|--|
| 1. Beaver Creek WMA | 8. Headwaters of the South Skunk WMA | 15. Middle Cedar WMA |
| 2. Boone River WMA | 9. Indian Creek WMA | 16. Mud Creek, Spring Creek & Camp Creek WMA |
| 3. Catfish Creek WMA | 10. Iowa Creek WMA | 17. North & Middle Rivers WMA |
| 4. Clear Creek Watershed Coalition | 11. Little Sioux Headwaters Coalition | 18. North Raccoon River Watershed Management Coalition |
| 5. East Nishnabotna Watershed Coalition | 12. Lower Cedar WMA | 19. Shell Rock River Watershed Management Coalition |
| 6. English River WMA | 13. Maquoketa River WMA | 20. Soap Creek Watershed Board |
| 7. Fourmile Creek WMA | 14. Middle-South Raccoon WMA | 21. South Central Iowa Cedar Creek WMA |
| | | 22. Turkey River WMA |
| | | 23. Upper Cedar River WMA |
| | | 24. Upper Iowa WMA |
| | | 25. Upper Wapsipinicon River WMA |
| | | 26. Walnut Creek WMA |
| | | 27. West Nishnabotna Watershed Coalition |

Figure 5.

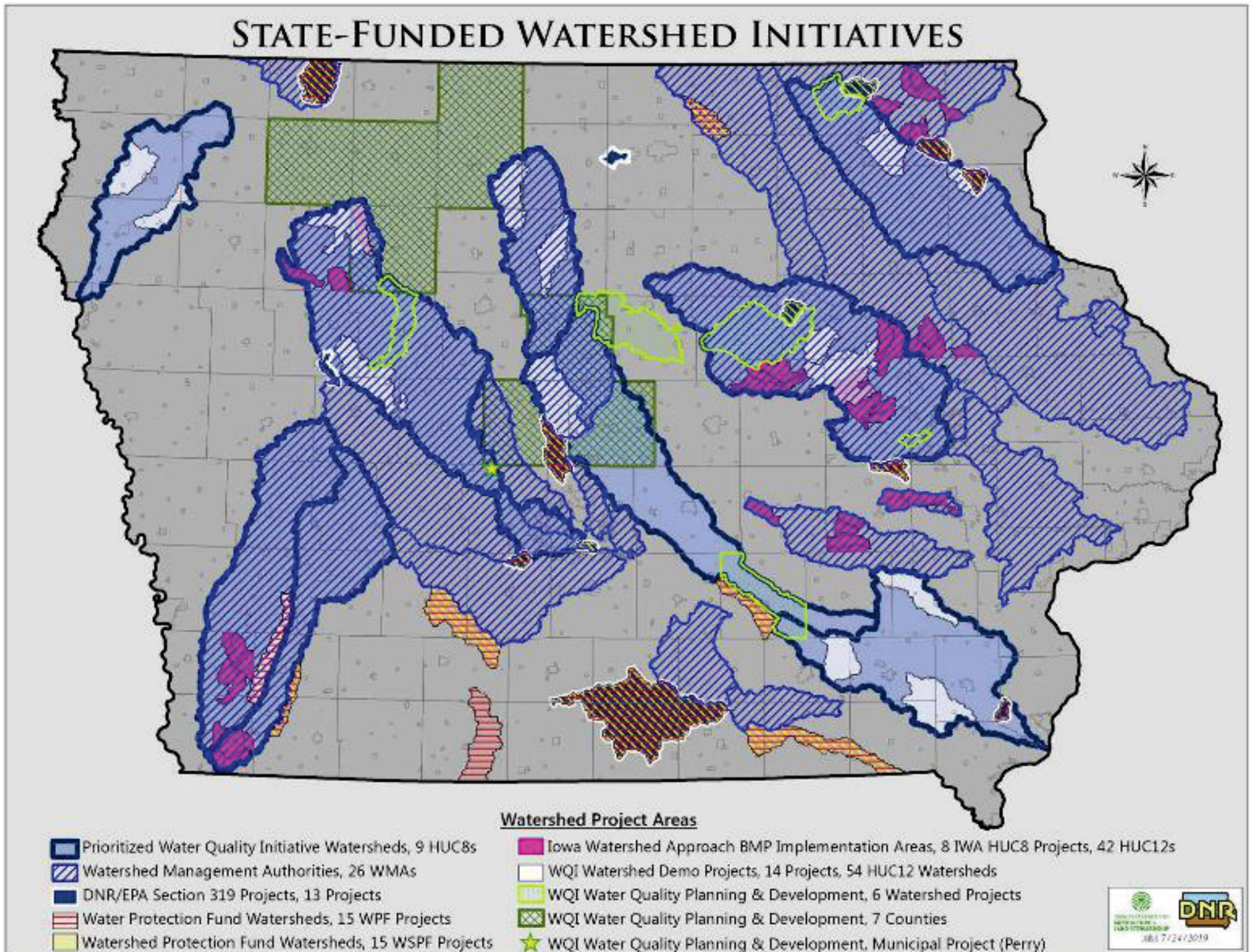


Figure 6. Funded Water Quality Initiatives