

Lake Red Rock Fish Habitat Enhancement Project



2021 Aerial Photo of Lake Red Rock Sediment Deposits at confluence of Des Moines River

Figure 3. Red Rock Sedimentation Aerial Photos from ISU GIS Website

Supporting Material

2011 Aerial Photo of Lake Red Rock Sediment Deposits at confluence of Des Moines River

(Yellow arrow in both photos points to sand pile from former sand quarry as visual reference to extent of sediment coverage.)



Lake Red Rock Fish Habitat Enhancement Project

Supporting Material



1996 Aerial Photo of Red Rock Lake Cove,
Left side of photo is west, top is north



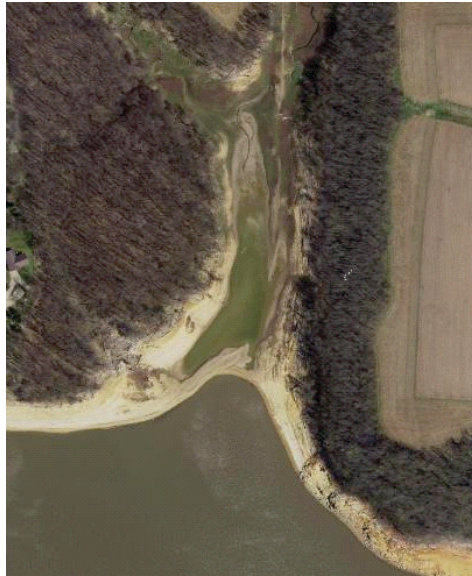
2002 Aerial Photo of Red Rock Lake Cove,
Left side of photo is west, top is north



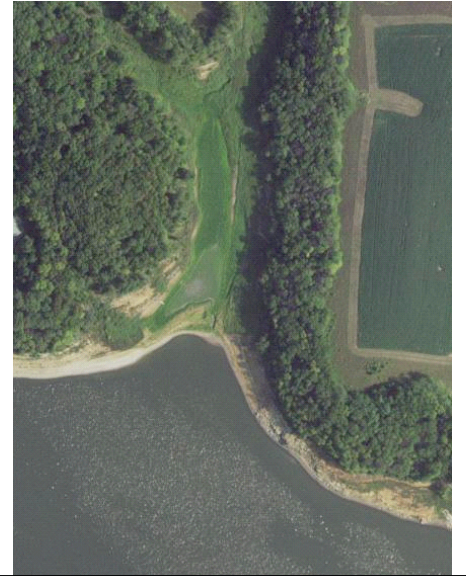
2008 Aerial Photo of Red Rock Lake Cove,
Left side of photo is west, top is north



2011 Aerial Photo of Red Rock Lake Cove,
Left side of photo is west, top is north



2016 Aerial Photo of Red Rock Lake Cove,
Left side of photo is west, top is north

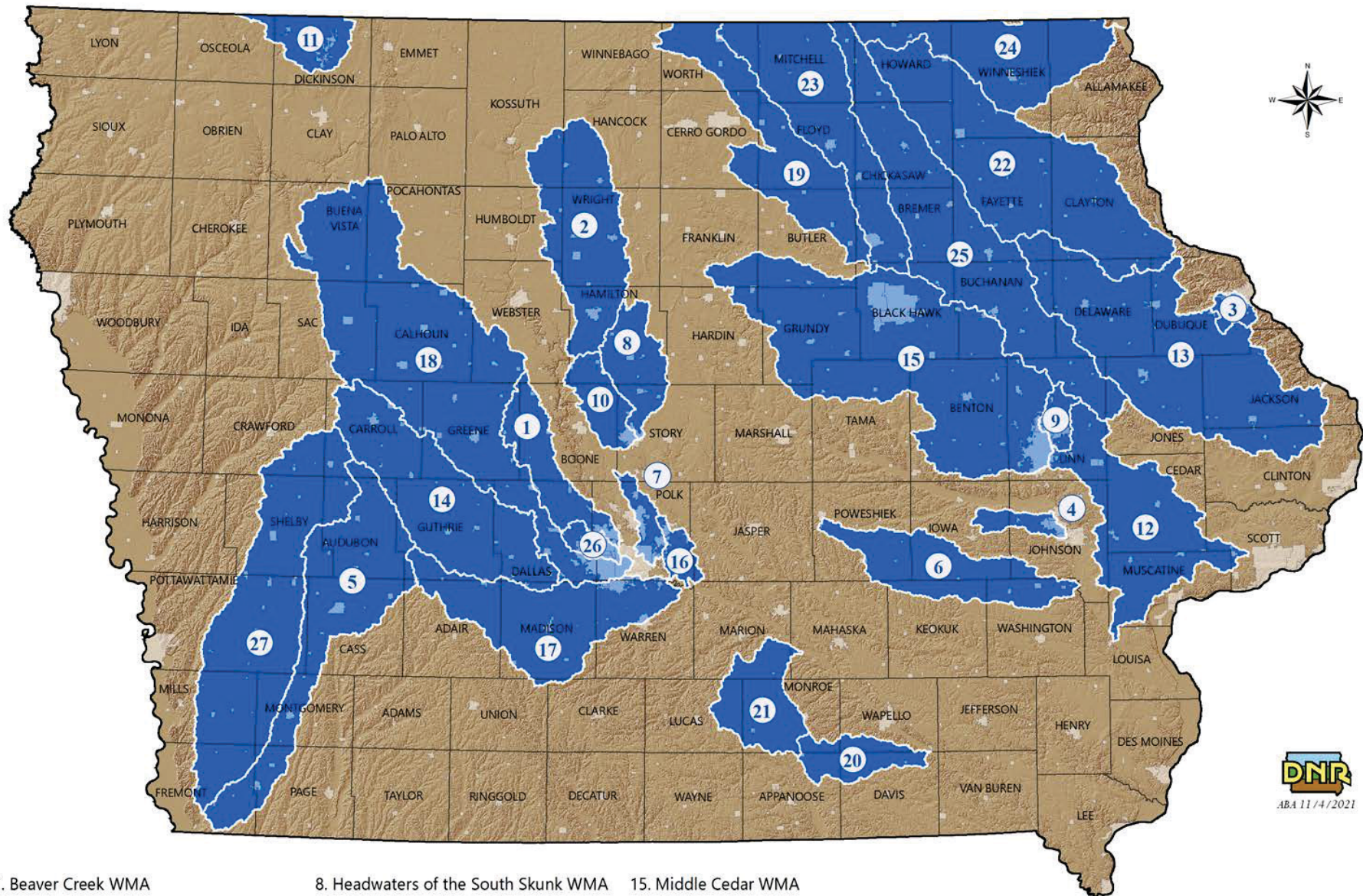


2021 Aerial Photo of Red Rock Lake Cove,
Left side of photo is west, top is north

Figure 4. Lake Red Rock Shoreline Erosion

Photos from ISU GIS Website

IOWA'S WATERSHED MANAGEMENT AUTHORITIES



- | | | | |
|---|---------------------------------------|--|--|
| 1. Beaver Creek WMA | 8. Headwaters of the South Skunk WMA | 15. Middle Cedar WMA | 22. Turkey River WMA |
| 2. Boone River WMA | 9. Indian Creek WMA | 16. Mud Creek, Spring Creek & Camp Creek WMA | 23. Upper Cedar River WMA |
| 3. Catfish Creek WMA | 10. Iowa Creek WMA | 17. North & Middle Rivers WMA | 24. Upper Iowa WMA |
| 4. Clear Creek Watershed Coalition | 11. Little Sioux Headwaters Coalition | 18. North Raccoon River Watershed Management Coalition | 25. Upper Wapsipinicon River WMA |
| 5. East Nishnabotna Watershed Coalition | 12. Lower Cedar WMA | 19. Shell Rock River Watershed Management Coalition | 26. Walnut Creek WMA |
| 6. English River WMA | 13. Maquoketa River WMA | 20. Soap Creek Watershed Board | 27. West Nishnabotna Watershed Coalition |
| 7. Fourmile Creek WMA | 14. Middle-South Raccoon WMA | 21. South Central Iowa Cedar Creek WMA | |

Figure 5.

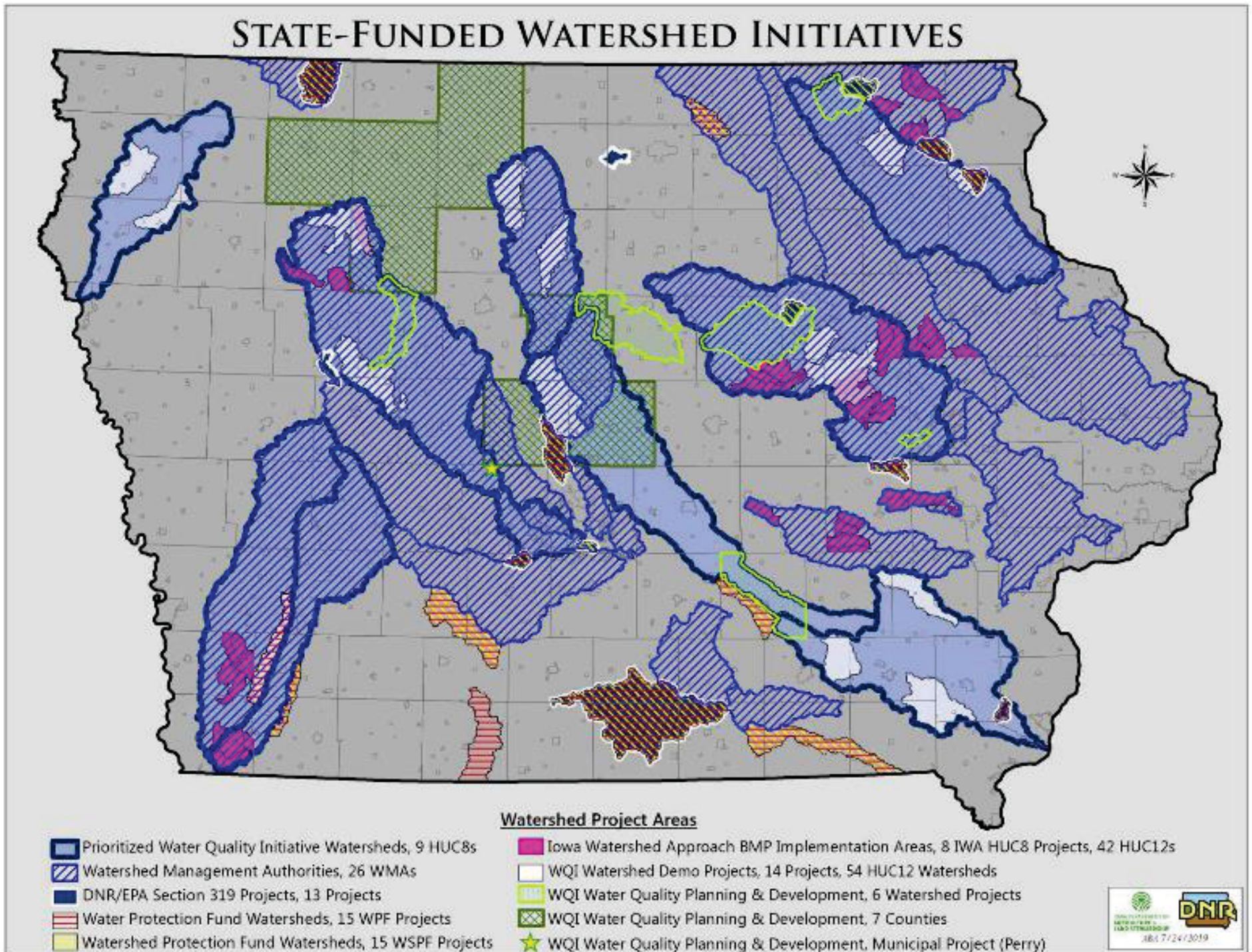


Figure 6. Funded Water Quality Initiatives